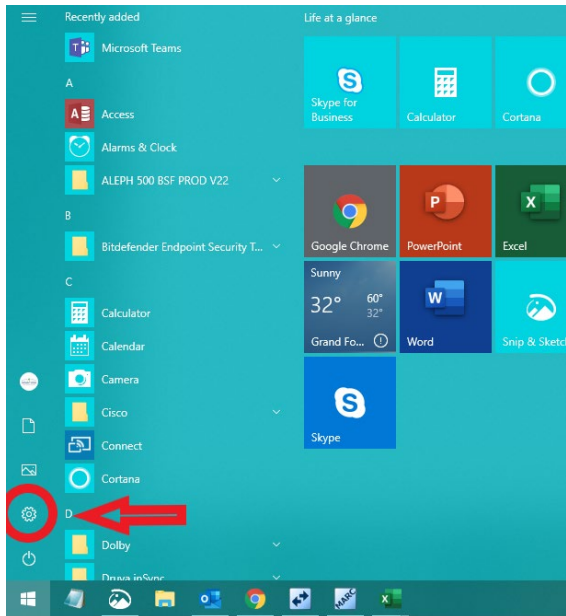


## How to find your computer's name

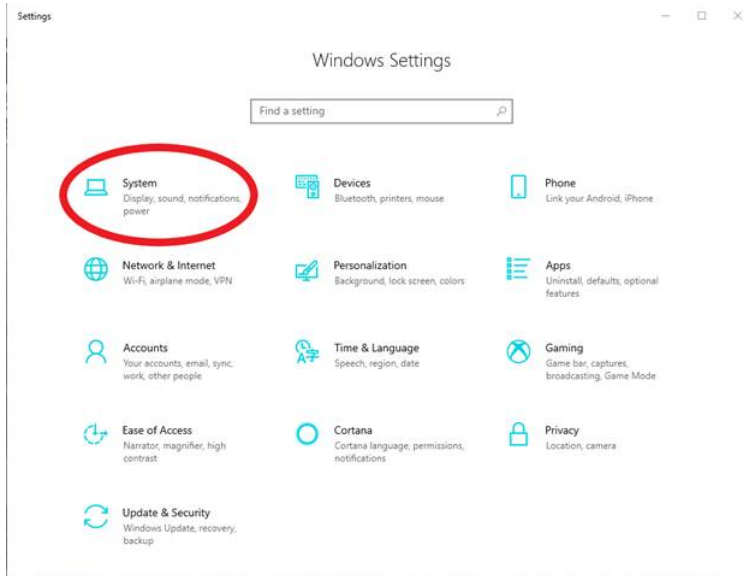
1. Click on the **Start button** in the lower left hand corner of your screen



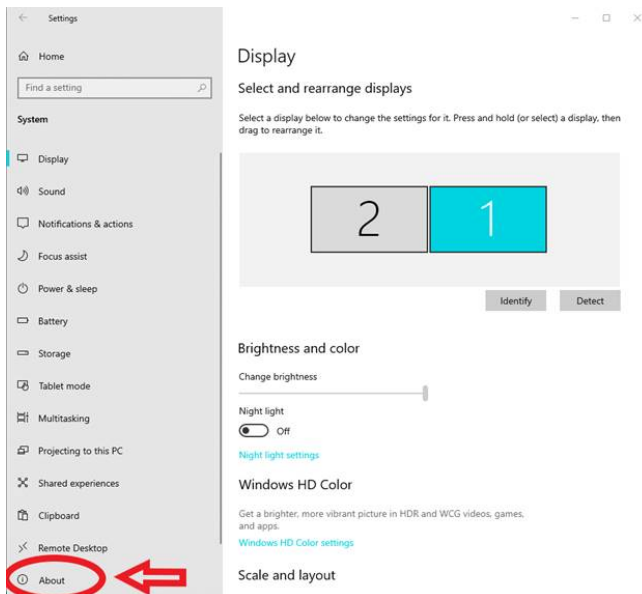
2. **Click on Settings** – it looks like a gear, and should be the second button from the bottom above the Start button (if you run Windows 10)



3. A box called Windows Settings will pop up. **Click on System**, which should be the first option in the first row on the left-hand side.



4. From the options on the left, scroll down until you see **About**. Click this.



5. Under Device Specifications, you should see Device name. This is what we need.

